



# EAGLE EXPRESS



Phone: 413 423-3326

Internet – <http://www.erving.com>



**Monday, February 12<sup>th</sup>**  
School Committee 6 pm

**Tuesday, February 13<sup>th</sup>**  
Jeff Mack, Author/Illustrator visits

**Thursday, February 15<sup>th</sup>**  
PK Coffee Hour – 8:30am in conf rm  
All School assembly: Motoko's Origami Adventure  
2 pm in the gym  
**NO ALL SCHOOL SING**

**Monday 19<sup>th</sup> – Friday 23<sup>rd</sup>**  
No School for Vacation Week

**Friday, February 23<sup>rd</sup>**  
Erving Recreation Commission  
Snow Tubing Event  
Berkshire East



**This Weekend ☺**

A very special FREE event at the Eric Carle Museum  
Saturday, February 10<sup>th</sup>  
10am-4pm

An annual celebration of reading and friendship, with a  
FREE Mo Willems book for every child who attends, thanks  
to First Book—[www.firstbook.org](http://www.firstbook.org)  
While supplies last!

King Ward Coach Lines will provide free bus service from  
Greenfield, leaving the public parking lot behind Wilson's at  
10 am and leaving the museum at 2 pm. Seating is limited, so  
call 413-559-6301 or email [info@carlemuseum.org](mailto:info@carlemuseum.org) for  
reservations.



**This Weekend ☺**

February 10, 2018

9:30 am at Greenfield Cinemas

**Movie Fundraiser:** Peter Rabbit will be showing at  
the Garden Cinema on Saturday 2/10 at  
9:30am. Tickets are \$5 at the door and seats fill up  
quickly! Total proceeds will go directly to the PTO  
and filter to each class equally.

**100 Mile Club® Upcoming Morning  
Walking Dates**

February 15<sup>th</sup> at 8am ☺



**Please Note**

**This months All School Sing has been canceled and in  
its place we will have a presenter by the name of  
Motoko.**

## Scholarship Opportunities Erving Teachers' Association Erving PTO

The Erving Teachers' Association and the Erving PTO are pleased to announce two scholarship opportunities. Students need only submit one application to be considered for both awards. Winners of an ETA scholarship of \$300 and a PTO scholarship of \$200 will be chosen after the receipt of a complete application. The scholarship is available to any June 2017 or 2018 high school graduate who has attended Erving Elementary School. Each application will be judged on academic performance, citizenship, and school and community involvement. Applications are available at the Erving Elementary School office, at your high school guidance office or can be downloaded from the [erving.com](http://erving.com) website.

Completed applications must be mailed to Erving Elementary School by Friday, April 27, 2018.

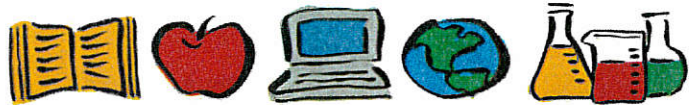
---

## Scholarship Opportunities Erving Teachers' Association Erving PTO, for Franklin County Tec School

The Erving Elementary PTO will be awarding (1) \$200.00 scholarship to a graduation senior of the Franklin County Technical School. The scholarship is available to any June 2018 graduating senior, residing in Erving who has attended a minimum of one year at the Erving Elementary School. Each application will be judged on academic and trade performance, citizenship, school/community involvement, and how they will use the money awarded to purchase tools/materials for their trade/field. Applications are available at the Erving Elementary School office and at the FCTS guidance office.

Completed applications must be mailed to Erving Elementary School by Friday, April 27, 2018.

---



## *News from the Principal*

*Dear Families and Friends of Erving  
Elementary School,*

"Has Erving Elementary School ever considered consolidating the February and April vacations into one week in March?" This is a question that comes up around this time every school year. In fact it has been a topic of conversation at many schools across the state, especially with all of the snow days, broken schedules, and extended school year, which is now perilously close to the last week of June. In the interest of hearing everybody's voice, we will be sending out a survey to all of our parents, guardians, and members of staff, asking for input to a series of questions. Please be on the lookout for this survey, which will accompany next week's newsletter. The survey information will be presented to the School Committee on a date to be determined.

Have a lovely weekend.  
Sincerely,

Jim Trill  
Principal

---

### ***Interested in learning about how to keep your children safe?***

- From situations where they may become targeted.
- From situations where they are exposed to inappropriate media, or information.
- From situations where they may be vulnerable to sexual abuse.

Join Pam Ososky, our School Psychologist and Brenda Mozdierz from the Greenfield DCF at the Erving Elementary School on **Tuesday, February 27th at 6pm**, in a discussion about personal safety, and learn about the curriculum the school uses to teach children how to protect themselves. Coffee and light snacks will be provided.



Second Grade is thinking deeply about  
**DOUBLE AND TRIPLE DIGIT NUMBERS!**

To show our understanding about these numbers, we created "**NUMBER BROCHURES**" to teach others about our numbers. We illustrated and wrote about our triple digit numbers in a variety of ways. Listen to these quotes about place value, you'll be impressed!

Ava: "I know a lot of subtraction equations that equal 276 like  $286 - 10 = 276$ ."

Brooke: "I know that  $200 + 200 + 67 = 467$ ."

Cadance: "There can be a lot of equations that you can make for 256, like  $100+100+56=256$ ."

Emily: "415 has 4 hundreds, a ten and five ones in it."

Emmett: "311 has 3 hundreds, 1 ten and 1 one. You spell it like this...*three hundred eleven*."

Everett: "There's 23 tens and 4 ones in 234."

Jaiden: "If you had two 100s, you add five 10s and you add one single, you would get 251."

Keith: "You can make these numbers in different ways. You can write a story problem, or write it with words and you can write equations. There are 2 hundreds, 7 tens and 7 ones in 277."

Mairin-Taj: "I now know that there is four 100s, nine 10s, and eight ones. It makes 498."

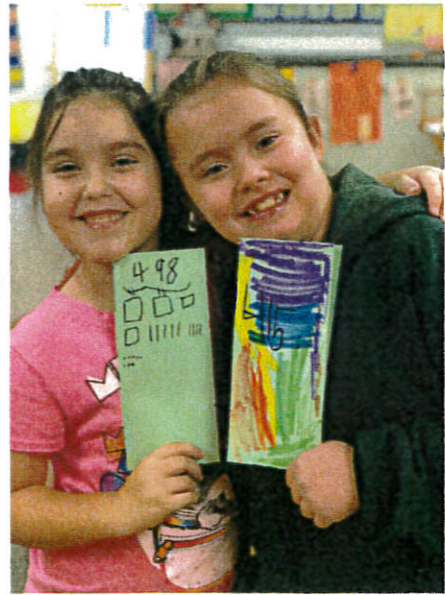
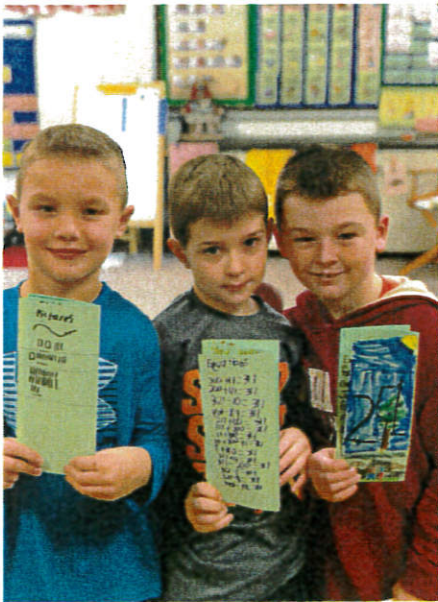
Tori: "I know  $210 + 68 = 278$ ."

Sophie: "I know that 49 tens and 9 ones equals 499."

Silas: "I made 63. There's 6 tens and 3 ones.  $60+3=63$ ."



Get kids to.....  
**TALK MATH**



## After School Program



**Belonging • Encouragement • Respect**

Hello from After School,

This week the students worked on how many water drops could they put on a penny. It was fun to see their faces as the numbers got bigger and bigger. Cadance was able to fit 48 water drops. Robot building out of recycled materials was a big hit as well. Next week the students can look forward to Valentines Day inspired STEAM activities, Thaumatrope, stick harmonicas and outside adventures.

Michelle Fisher



## Wednesday, February 14

### 1:30 pm

*What better way to spend Valentine's Day than to visit the Erving Public Library and build a WOBBLEBOT!*

### Make-A-Bot Workshop



from website:

<http://researchparent.com/homemade-wobblebot/>

Kids ages 8 & up can probably make this independently--kids under age 8 will need help from a parent/guardian.

For more information, contact the Erving Public Library:

423-3348 or

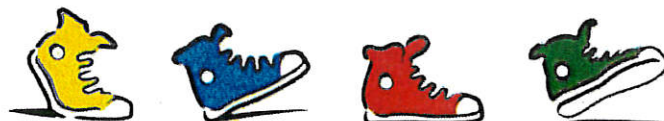
[library@erving-ma.org](mailto:library@erving-ma.org)

Not a school sponsored event.

---

### Great News!

The 100 Mile Club® Wednesday afternoon walking club returns on April 11<sup>th</sup>! Look for a permission slip in the April 6 Eagle Express!





News from  
the Library

Mark your  
calendars now!

On Tuesday, Feb. 13  
we have a special guest:

**Jeff Mack**  
author/illustrator



preK-grade 3

9:20-10:05 am

grades 4-6

10:20-11:20 am

All are welcome to join us!

in case of snow, he will  
come on Friday, Feb. 16

same times

**AND ALSO COMING UP . . .**

On Sunday, March 4,  
it's our 5<sup>th</sup> annual  
Celebration of Reading  
& Books:  
Dr. Seuss's Birthday Party



*WHEN:* 2:00-4:00 pm

*WHERE:* Erving Elem. School Library  
& Cafeteria

*WHO:* Kids of all ages are invited to hear  
performer Roger Tincknell sing songs,  
tell stories, teach games & have fun

*WHAT:* Party Favors & Refreshments  
will be served

ALL CHILDREN COMING TO DR. SEUSS PARTY MUST BE ACCOMPANIED BY AN ADULT

Any questions? Please contact Ms. Urban: [urban@erving.com](mailto:urban@erving.com) or 423-3326 ext. 103



Jeff Mack & Roger Tincknell appearances  
are funded by the EES PTO and  
the Erving Cultural Council, a local agency which  
is supported by the Mass. Cultural Council.



# Erving Elementary School Fundraiser to benefit all classes

## DONATIONS NEEDED for Cash and Prize Calendar Raffle



**Tickets will be going home with students in March** and prizes will be drawn daily in April.

Donations must be brand new and can include items like gift certificates, free passes to an event or stay, gift baskets of products, etc. The more unique and desirable the donation, the more tickets we hope to sell, and the more money raised for each classroom!

Some of the committed donors include: Snap On Tools, LuLaRoe, Bagley Goodwin and Hrinda Dentistry, the French King Bowling Alley, and M3G Photography.

**Donation Deadline: February 16<sup>th</sup>** to the EES front office



# Erving Elementary School PTO

## April Cash and Prize Calendar Raffle

**Purpose:** The Erving Elementary School PTO is holding an all school fundraiser in the form of a cash and prize calendar raffle in the month of April. Each day a ticket will be drawn for that day's chosen prize or cash amount, pre-printed on calendars. Winner will be notified via phone or email in addition to a posting on our EES PTO FB Page and then returned into the raffle for a chance to win again a different day. The Calendars will be printed and distributed to students to sell in March, the more tickets sold, the more money netted for each classroom and all 145 students!

**How to Buy Tickets:** Starting in March  
In person: All Erving Students  
Facebook: Erving Elementary School PTO Page  
Email: [pto@erving.com](mailto:pto@erving.com)

### **Present Donations:**

2nd Street Bakery, Gift Certificate  
Andy's and the Oak Shop, \$30 gift certificate  
Bagley Goodwin Hrinda, Drawstring backpack with oral supplies  
Black Cow Burger Bar, Gift Certificate  
Cleary's Jewelers, Gift Certificate  
Dan's Veggies, Two \$10 gift certificates  
Elements Hot Tub Spa, \$50 gift certificate for 30 min hot tub session for two  
French King Bowling Alley, Twenty Five, 2 free game bowling passes  
French King Restaurant, Gift Certificate  
Greenfield Farmers Exchange, \$25 Gift Certificate  
Hair Affair Salon, Gift Certificate  
Lularoe by Brooke Shippa, \$25 gift certificate and free leggings  
M3G Photography, free mini session photo shoot  
Poplar Mountain Maple, Half gallon maple syrup  
Prondeckis Store, Gift Certificate of favorite meal  
Snap On Tools, 7 piece soft grip combination screwdriver set  
Snap On Tools, Two hot/cold stainless steel travel tumblers and beach towel  
Snap On Tools, Limited edition ratcheting screwdriver  
Snap On Tools, multiple "S" wall mounts  
The 99 Restaurant, \$25 Gift Certificate  
Wagon Wheel, Two small ice cream cone coupons

**And more!!**



Mark your calendars now for the 5<sup>th</sup> Annual Celebration of  
Reading and Books: Dr. Seuss's Birthday Party



**When:**

Sunday, March 4 2:00-4:00 pm

**Where:**

Erving Elementary School Library & Cafe  
28 Northfield Rd/Rt. 63, Erving

**Who:**

Kids of all ages are invited to hear  
musician Roger Tincknell sing songs,  
tell stories, teach games, have fun

**What:**

Party Favors & Free Book Give-away  
Birthday Refreshments

More information will be coming--watch for it at the Erving Public Library and/or  
at the Elementary School

**ALL CHILDREN MUST BE ACCOMPANIED BY AN ADULT!**

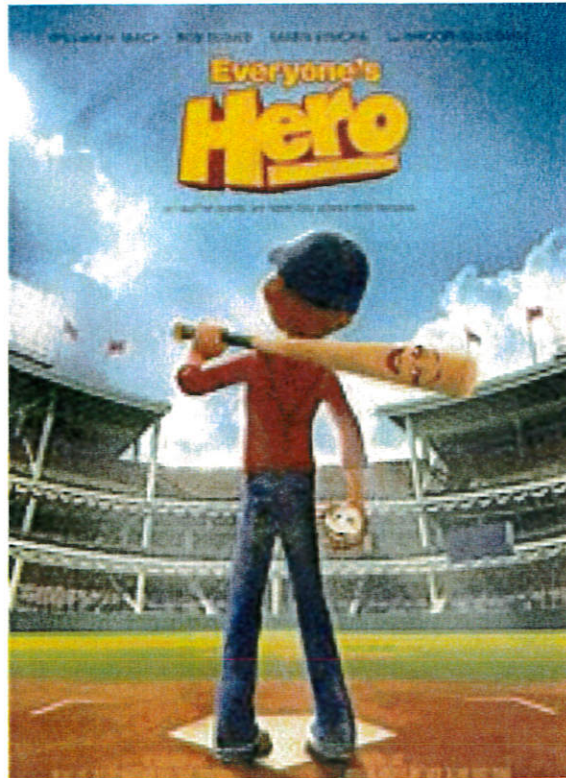
Any questions? Please call the school library: 423-3326 ext. 103



Roger Tincknell's performance is  
supported by the Erving Cultural  
Council, a local agency which is  
supported by the Mass. Cultural Council.



# Family Movie Night



**OPEN TO THE PUBLIC**

**Friday March 9, 2018**

**6:30pm**

**Erving Senior Center---1 Care Drive, Erving, MA 01344**

Yankee Irving has a chance to either play it safe or become a hero. Join him and his friends on his funny journey to rescue Babe Ruth's stolen bat before the end of the 1932 World Series.

*Concessions for sale. Suggested donations of \$5/person (max \$20/family)*

To benefit the purchase of yearbooks for the Erving 6<sup>th</sup> grade graduating class

**\*\*NOT A SCHOOL SPONSORED EVENT\*\***

ERVING RECREATION  
**SNOWTUBING** 10am to noon  
**OUTING FEB 23**  
**BERKSHIRE EAST**

\$5 per person is due by February 16th  
Submit payment with signed waivers  
in the EES drop box or at Town Hall.  
Make checks to the Erving Rec Comm  
questions: [rec@erving-ma.org](mailto:rec@erving-ma.org)

All riders must be at least  
42" to participate!  
No tandem riders!

**\$5 for Erving  
Residents!! \$10  
non-residents**



# Berkshire East LLC

## Snowtubing Release from Liability

---

*PLEASE READ CAREFULLY BEFORE SIGNING*

1. I accept the use of a snow tube and accept full responsibility for the care of the snow tube while in my possession.
2. I understand that there are inherent and other risks involved but are not limited to; variations in snow, steepness and terrain, ice and icy conditions, moguls, rocks, trees, and other forms of forest growth or debris (above and below the surface), bare spots, other forms of natural or man made obstacles on and/or off chutes, as well as collisions with equipment, obstacles or other snow tubers. Snow chute conditions vary constantly due to weather changes and snow tubing use. Be aware that snowmaking and snow grooming may be in progress at any time. These are some of the risks of snow tubing. All are inherent risks of snow tubing present the risk of serious and/or fatal injury.
3. I agree to hold harmless and indemnify Berkshire East LLC, and/or any employee of and aforementioned for the loss or damage, including and loss or injuries that result from damages related to the use of the snow tube or lift.
4. I understand and am aware that snow tubing is a HAZARDOUS ACTIVITY. I understand that snow tubing and the use of snow tubes involves a risk of injury to any or all parts of my body. I hereby freely agree and expressly assume and accept responsibility for any and all risks of injury or death while participating in this activity. I have explained the aforementioned risks to my child and believe that my child has the ability to appreciate these risks. \_\_\_\_\_ (Please initial).
5. As purchaser of this ticket, I agree that all disputes arising under this agreement and/or from my use of the facilities at Berkshire East LLC shall be litigated exclusively in the Court of Franklin County, Massachusetts.
6. Snow tubes are to be used on designated snow tubing hills only. Anyone using a snow tube outside of the designated snow tubing area will lose his or her snow tubing ticket.

I HAVE READ THE ABOVE PARAGRAPHS AND FULLY UNDERSTAND THEM:

Date: \_\_\_\_\_ Age: \_\_\_\_\_

Name: \_\_\_\_\_

Address: \_\_\_\_\_

City/Town: \_\_\_\_\_ State: \_\_\_\_\_ Zip: \_\_\_\_\_

Telephone: (        ) \_\_\_\_\_

Signature: \_\_\_\_\_

Signature of Parent/Guardian if Under 18 years old:  
\_\_\_\_\_